

# Till Roy

Contrabass

♩ = 100

Olov Ambrosius

Swing

mp

Musical staff with notes and dynamic marking *mp*. The staff shows a melodic line starting with a half note G2, followed by quarter notes A2, B2, and C3, and ending with a half note D3. Above the staff, there are three double bar lines with a '2' above each, indicating fingerings for the notes.

9

Musical staff with four measures, each containing a double bar line and a '2' above it, indicating fingerings for the notes.

17 Cmaj7 E♭maj7

*f*amm-y

Musical staff with four measures of slash notation. Above the staff, the chords Cmaj7 and E♭maj7 are indicated. Below the staff, the dynamic marking *f*amm-y is present.

21 Cmaj7

1.  
E♭maj7

Musical staff with four measures of slash notation. Above the staff, the chord Cmaj7 is indicated. A first ending bracket spans the last two measures, with E♭maj7 written below it.

## A Trumpet melody

25 G7(sus4) Cmaj7 E♭maj7

2.

Musical staff with five measures of slash notation. Above the staff, the chords G7(sus4), Cmaj7, and E♭maj7 are indicated. A second ending bracket spans the last two measures, with a '2.' above it.

30 Cmaj7 E♭maj7

Musical staff with five measures of slash notation. Above the staff, the chords Cmaj7 and E♭maj7 are indicated.

35 A♭maj7 E♭maj7 Cmaj7 A♭maj7

Musical staff with eight measures of slash notation. Above the staff, the chords A♭maj7, E♭maj7, Cmaj7, and A♭maj7 are indicated.

## B

43 Cmaj7 E♭maj7 Cmaj7 E♭maj7

*mf*

Musical staff with eight measures of slash notation. Above the staff, the chords Cmaj7, E♭maj7, Cmaj7, and E♭maj7 are indicated. Below the staff, the dynamic marking *mf* is present.


Contrabass

2


51 A $\flat$ maj7 Emaj7 Cmaj7 A $\flat$ maj7



59 **C** Eb7(sus4) A $\flat$ maj7 C7(b9sus4)



67 **D** Eb7(sus4) C7(sus4) D $\flat$ maj7




75 **E** mp 8 mf A $\flat$ maj7 Am7(b5) D7(#9)



**F** Trumpet solo

90 D7(sus4) Cmaj7 Ebmaj7



97 Gm7 Cmaj7 Ebmaj7



105 D7(sus4) A $\flat$ maj7 Emaj7



113 G7(sus4) **G** Cmaj7 Ebmaj7



121 Gm7 Cmaj7 Ebmaj7



129 D7(sus4) A $\flat$ maj7 D $\flat$ maj7



Contrabass

137 C7(sus4)

**H** Fm7

Bbm7

Eb7(sus4)

Abmaj7



145 C7(b9sus4)

**I** Fm7

Bbm7



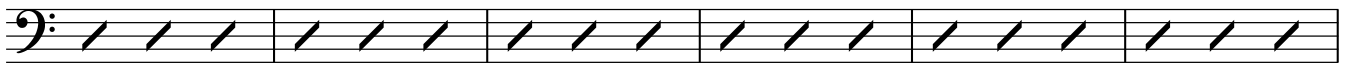
152

**J** Gmaj7(#11)



159 Em7

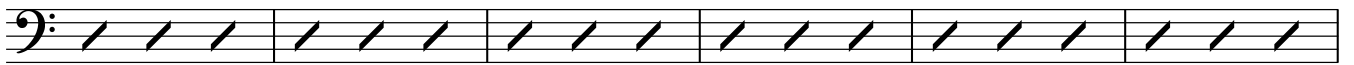
Gmaj7(#11)



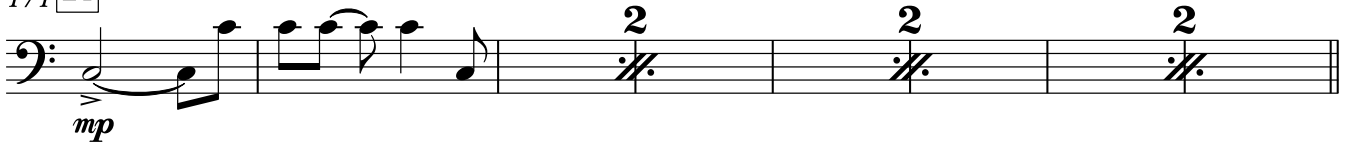
165

Ebmaj7(#11)

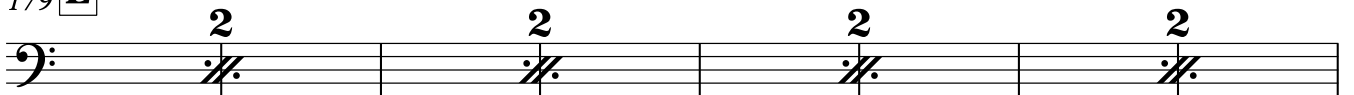
G7(sus4)



171 **K**



179 **L**

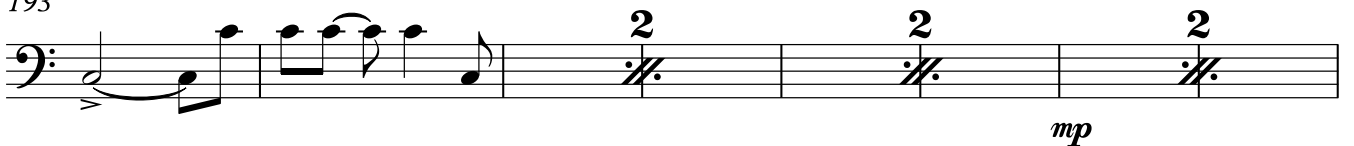


187

**M**



193



201

