

# BLACK NILE

(WAYNE. S)

ARRANGEMENT:  
PETTER IDERSTRÖM PANKINAHO

♩ = ♪ = <sup>3</sup>♩  
♩ = 190  
INTRO

Swing Time No Changes

5 4 BACKGROUNDS 4

13

18

23

29

35

39 **A** THEME 2

43 4 4

51

55

59

63

67

74

79

**B** THEME

83

87

93

98

103

111 **C** VAMP

117

122

127 **SOLO**  
**Fm7 ONLY 1ST TIME** Gb7 Fm7 Ebm7 Ab7 Dbmaj7

132 Gb7 Fm7 C7ALT. Fm7 Gb7 Fm7

138 Ebm7 Ab7 Dbmaj7 Gb7 Fm7 F7ALT. Bbm9

144 Bmaj7(#11)/Bb Am7(b5)

148 Fm7/Ab G7(#5) Gbmaj7 Bbm6/Db C7ALT.

151 Fm7 Gb7 Fm7 Ebm7 Ab7

155 Dbmaj7 Gb7 Fm7 C7ALT.

4  $Fm^7$   $Gb^7$   $Fm^7$   $Ebm^7$   $Ab^7$

$Dbmaj^7$   $Gb^7$   $Fm^7$   $C^7_{ALT.}$

**D**  $Fm^7$   $Gb^7$   $Fm^7$   $Ebm^7$   $Ab^7$   $Dbmaj^7$   $Gb^7$

$Fm^7$   $C^7_{ALT.}$   $Fm^7$   $Gb^7$   $Fm^7$   $Ebm^7$   $Ab^7$

$Dbmaj^7$   $Gb^7$   $Fm^7$   $F^7_{ALT.}$

1/2 TEMPO FEELING

ORIGINAL TEMPO

INTERLUDE

$Dm^7$  **E**  $Eb^7$   $Dm^7$   $Cm^7$   $F^7$

$Bbmaj^7$   $Eb^7$   $Dm^7$   $A^7_{ALT.}$   $Dm^7$   $Eb^7$

Dm7 Cm7 F7 Bbmaj7 Eb7 Dm7 Dm7



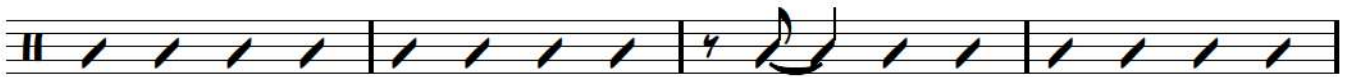
TRUMPSOLO 8 TAKTER



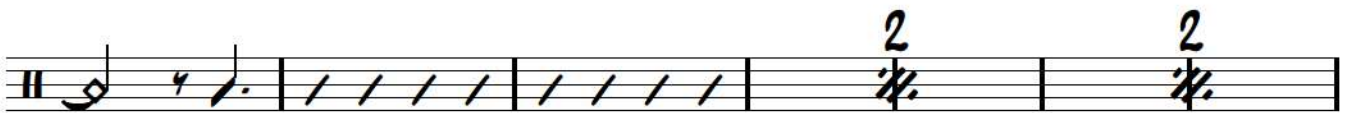
Dm7 Eb7 Dm7 Cm7 F7

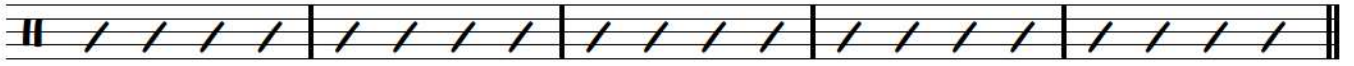
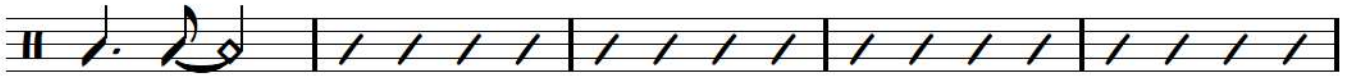


Bbmaj7 Eb7 Dm7 A7ALT.



**F** THEME





**Q** OUTRO

