

BLACK NILE

(WAYNE. S)

ARRANGEMENT:

PETTER IDERSTRÖM PANKINAHO

♩ = 190
INTRO

8 D7(SUS4) Ebmaj7(#11)



13 A7(b9)/E D7(SUS4)



18 Ebmaj7 A7(b9)/E



23



29



35



39 **A** THEME



46

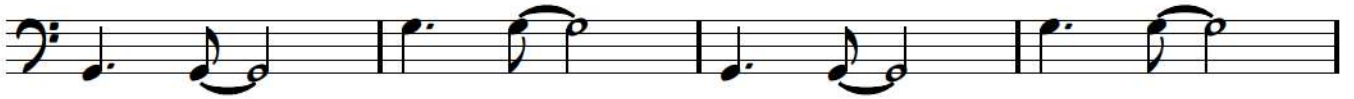


51 A7 Ab7(#11) G7 C7(SUS4) Fmaj7 D7(b9) Gm9 C7(b9)



55 Gm⁹

Abmaj7(♯11)/G



59 F#m7(b5)

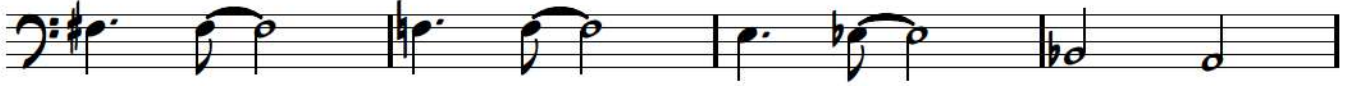
Fm7

E7(♯5)

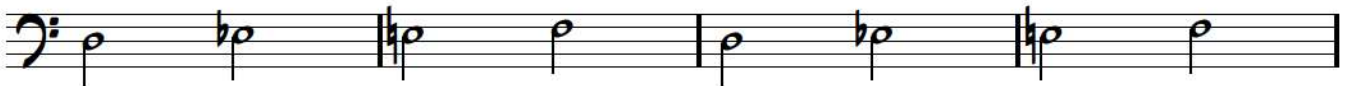
Ebmaj7

Gm^b/Bb

A7ALT.



63



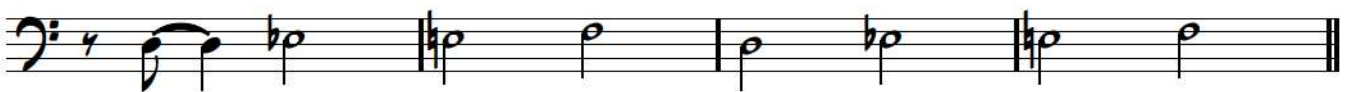
67



71



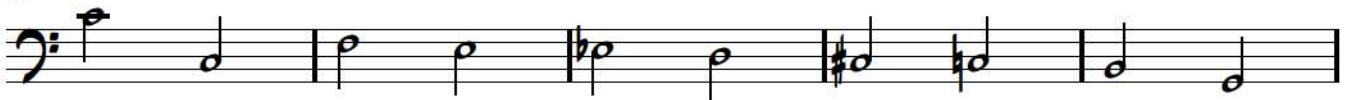
75



79 **B** THEME



86

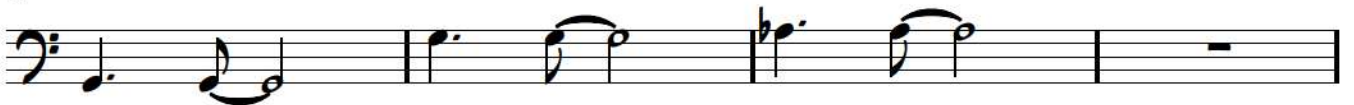


91 A7 Ab7(♯11) G7 Dm7/C

Fmaj7 D7(b9) Gm⁹ C7(b9)



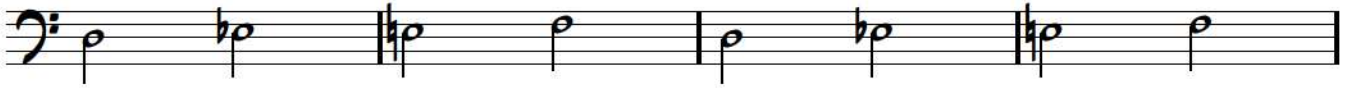
95



99



103



107



111 **C** VAMP



118



123



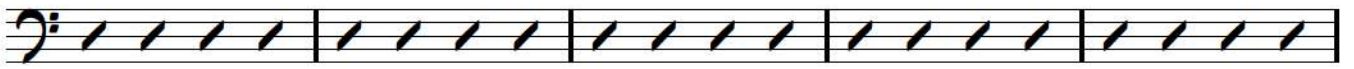
127 SOLO Fm7 ONLY 1ST TIME Gb7 Fm7 Ebm7 Ab7 Dbmaj7



132 Gb7 Fm7 C7ALT. Fm7 Gb7 Fm7



138 Ebm7 Ab7 Dbmaj7 Gb7 Fm7 F7ALT.



143 Bbm9 gmaj7(#11)/Bb Am7(b5) Fm7/Ab



149 G7(#5) Gbmaj7 Bbm6/Db C7ALT. Fm7 Gb7 Fm7



154 Ebm7 Ab7 Dbmaj7 Gb7 Fm7 C7ALT.



2.
Fm7 Gb7 Fm7

Fm7 **D** Gb7 Fm7

Ebm7 Ab7 Dbmaj7 Gb7 Fm7 C7ALT. Fm7

Gb7 Fm7 Ebm7 Ab7 Dbmaj7 Gb7 Fm7

F7ALT.

1/2 TEMPO FEELING
Fm11

Gbmaj7/F Cm7/F

Fm11 Gbmaj7/F Cm7/F Dbmaj9/F Gm7(b9) C7(b9) ORIGINAL TEMPO

INTERLUDE

Dm7 **E** Eb7 Dm7 Cm7 F7 Bbmaj7

Eb7 Dm7 A7ALT. Dm7 Eb7 Dm7

Cm7 F7 Bbmaj7 Eb7 Dm7 D7ALT.

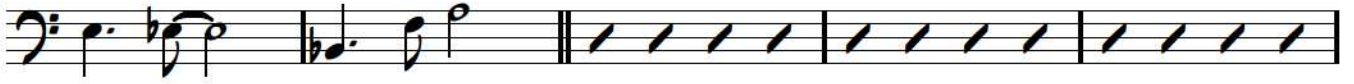
Bbm⁹



Dm⁷

Eb⁷

Dm⁷



Cm⁷

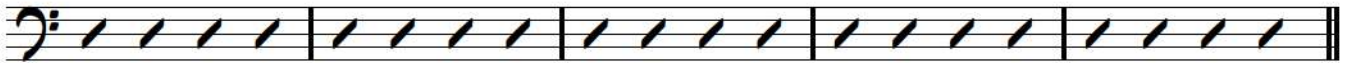
F⁷

Bbmaj⁷

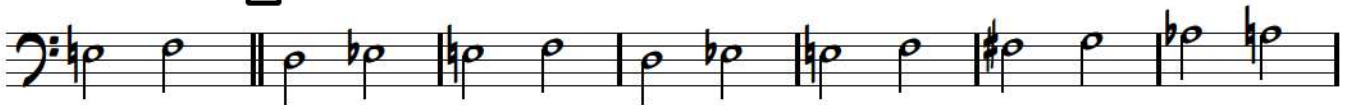
Eb⁷

Dm⁷

A⁷ALT.



F THEME



A⁷ Ab⁷(#11) G⁷



C⁷(SUS4)

Fmaj⁷

C⁷(b9)



G OUTRO



RIT.

6

